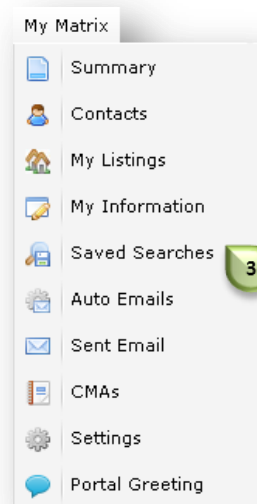
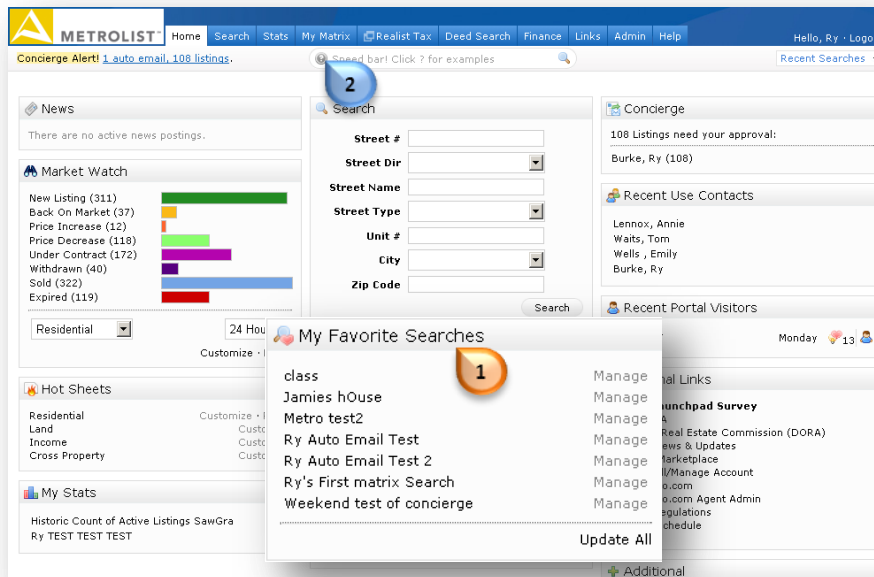
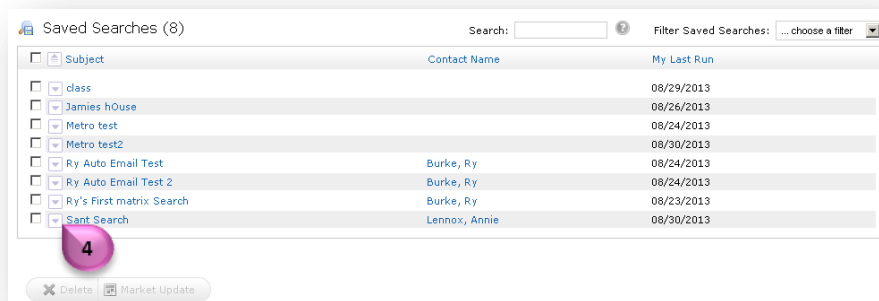


Access Saved Searches

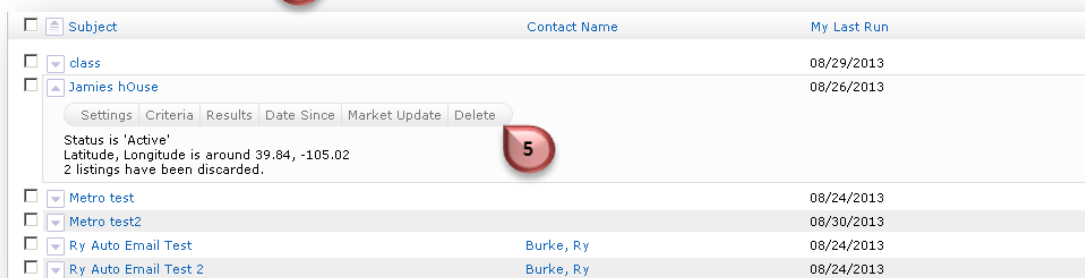
When a search is saved if the **“Enable as Favorite”** option was checked the search can be accessed from the **Dashboard** through the my **Favorite Searches** widget 1



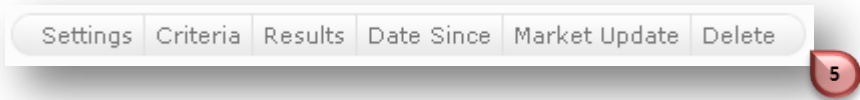
- Otherwise, hover over the **“My Matrix”** tab 2
- Click on **“Saved Searches”** 3
 - A list of your Saved Searches present



- Click on the drop down arrow next to the search of interest 4
 - The selection will expand 5
 - A button bar will present



Use the button bar to manage your Saved Searches



Settings

- Allows you to create an Auto Email
- Change the Contact Name
- Add an additional contact
- Verify the search criteria
- Enable/Disable on the Favorite Search Widget



Criteria

- Allows you to view and augment your search criteria

Results

- Displays the results you saw the last time you ran the search

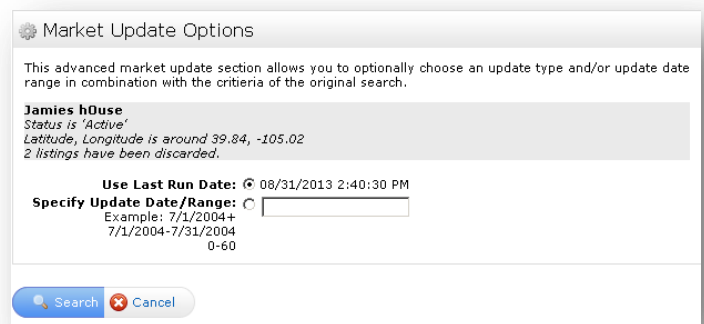
**Note: Results presented are not up to date –
Use Market Update to view current results**

Date Since

- Allows you to rerun the search as of today

Market Update

- Allows you to rerun the search from a specific date



Delete

- Removes your Saved Search
- A popup will appear verifying this request

