





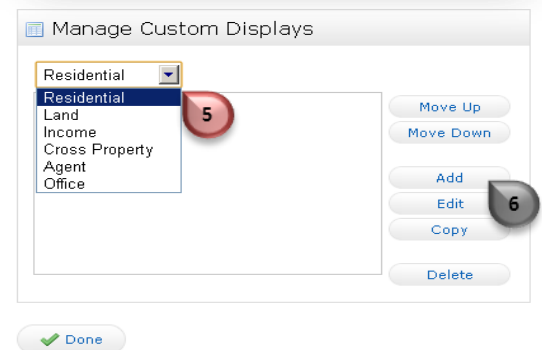
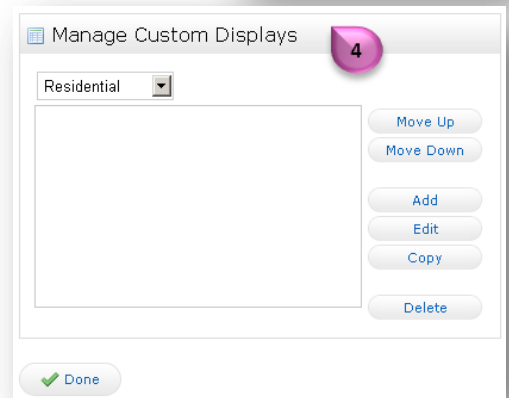
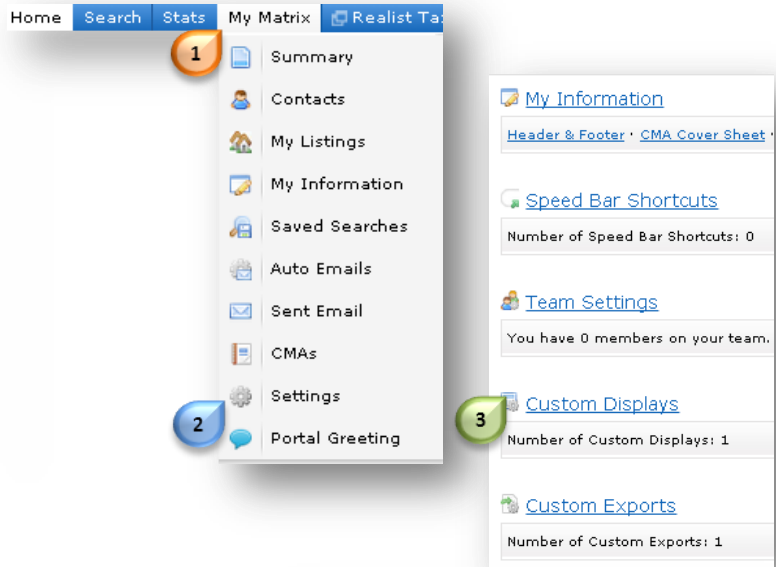
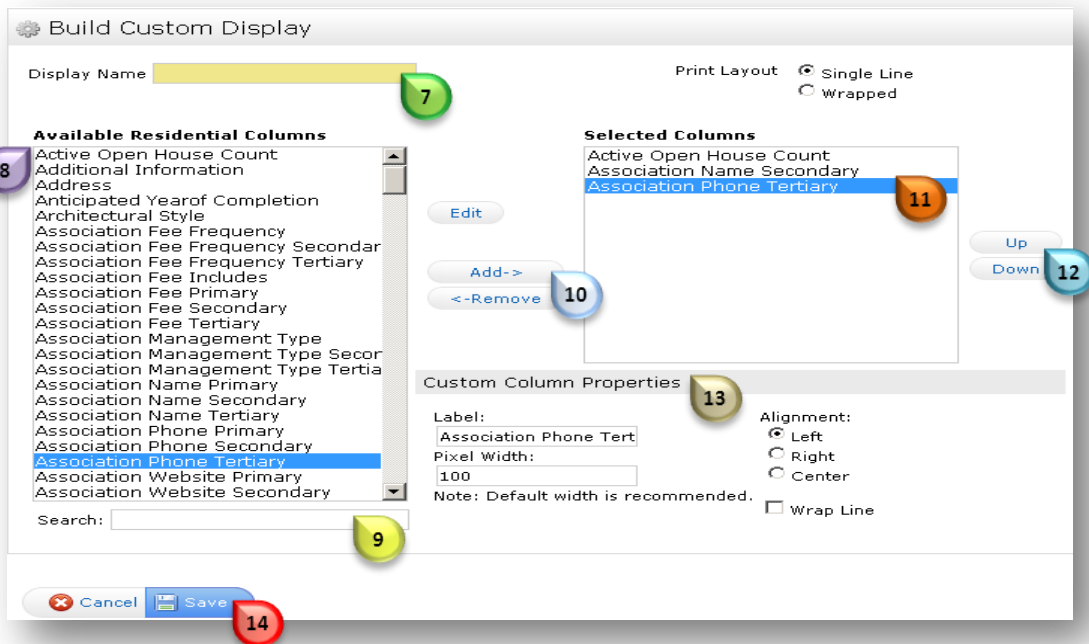


Create a Custom Display

- Hover over **“My Matrix”** 
- Select **“Settings”** 
- Click **“Custom Displays”** 
- **“Manage Custom Displays”**  appears
- Click the **drop down arrow** and select a property type 
- Click **“Add”** 





- Title the display using the “**Display Name**” 7 field
- Scroll through the “**Available Columns**” 8
 Note: Type key words in the Search field 9 to be taken directly to a field name
- Select the desired field(s) by clicking on them
 Note: Hold the control key to select multiples
- Click “**Add**” 10
- Selections can now be seen under “**Selected Columns**” 11
- Use the “**Up**” or “**Down**” buttons 12 to select the order of the “**Selected Columns**”
- Use **Custom Column Properties** 13 to rename specified fields, change column alignment or pixel width
- Select “**Save**” 14

Note: Custom Displays can be accessed from any results screen. Simply select your display from the Display dropdown. 15 All Custom Displays will start with “my”

