



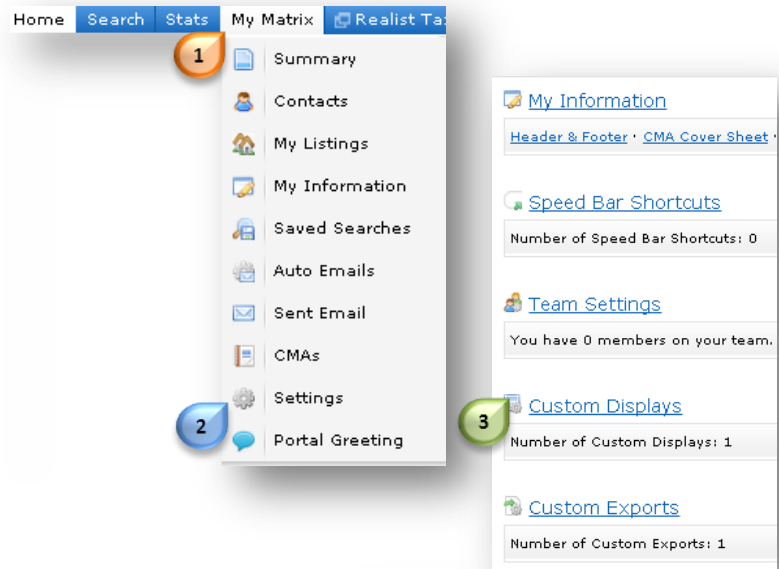

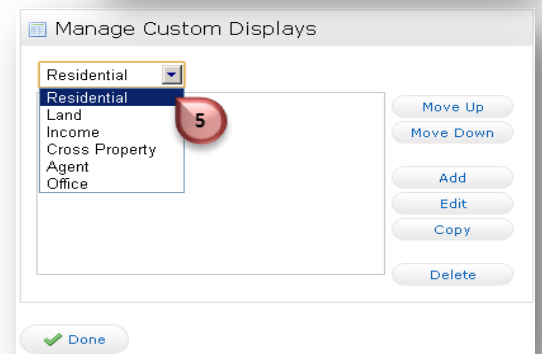
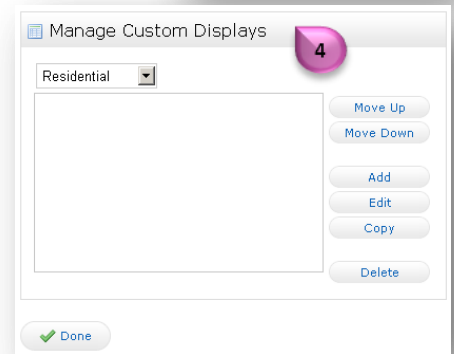


# Edit Custom Displays

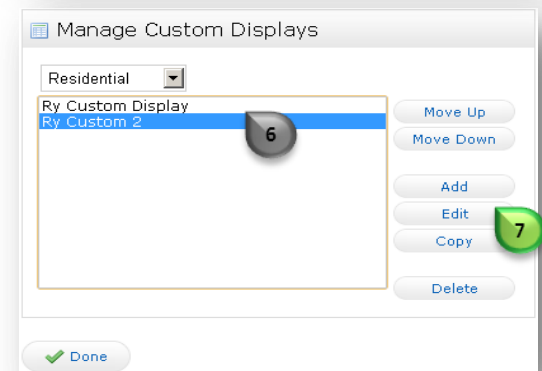
- Hover over **“My Matrix”** 
- Select **“Settings”** 
- Select **“Custom Displays”** 
- **“Manage Custom Displays”**  appears



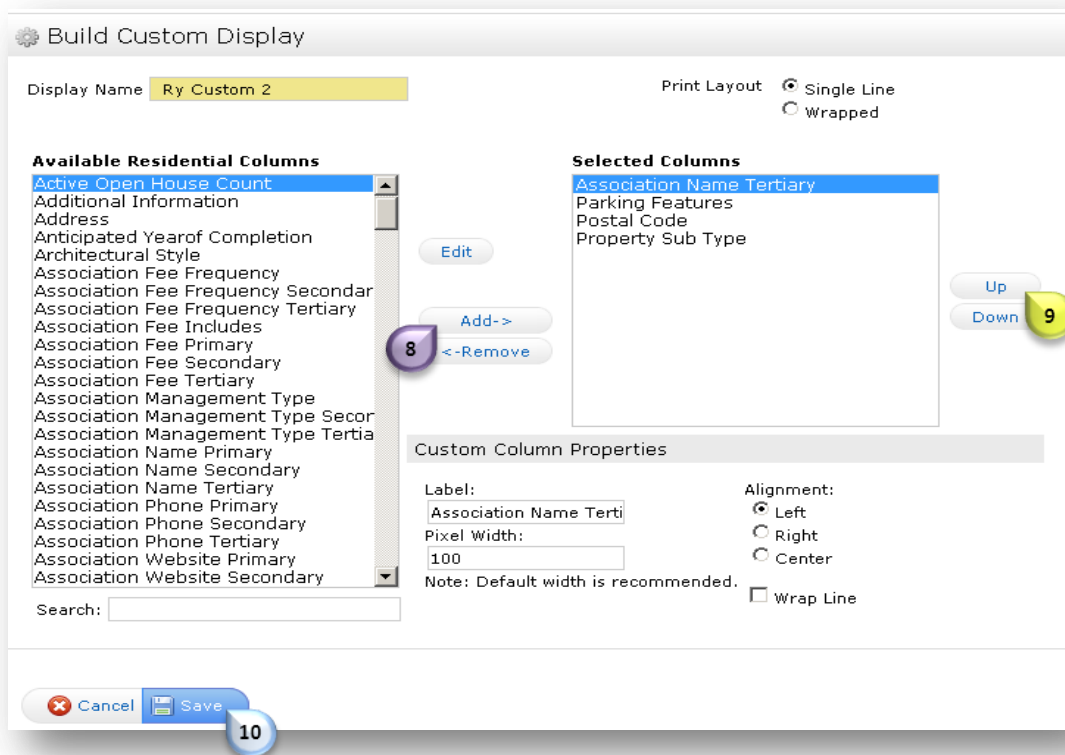
- Click the **drop down arrow**  and select a property type



- Select the custom Display you wish to edit 



- Select **“Edit”** 



- The **Build Custom Display** screen will appear
- Make desired changes
  - Note: Use the “Add” and “Remove” <sup>8</sup> buttons to add and remove columns
  - Use the “Up” and “Down” <sup>9</sup> buttons to reorder columns
- Select “Save” <sup>10</sup>