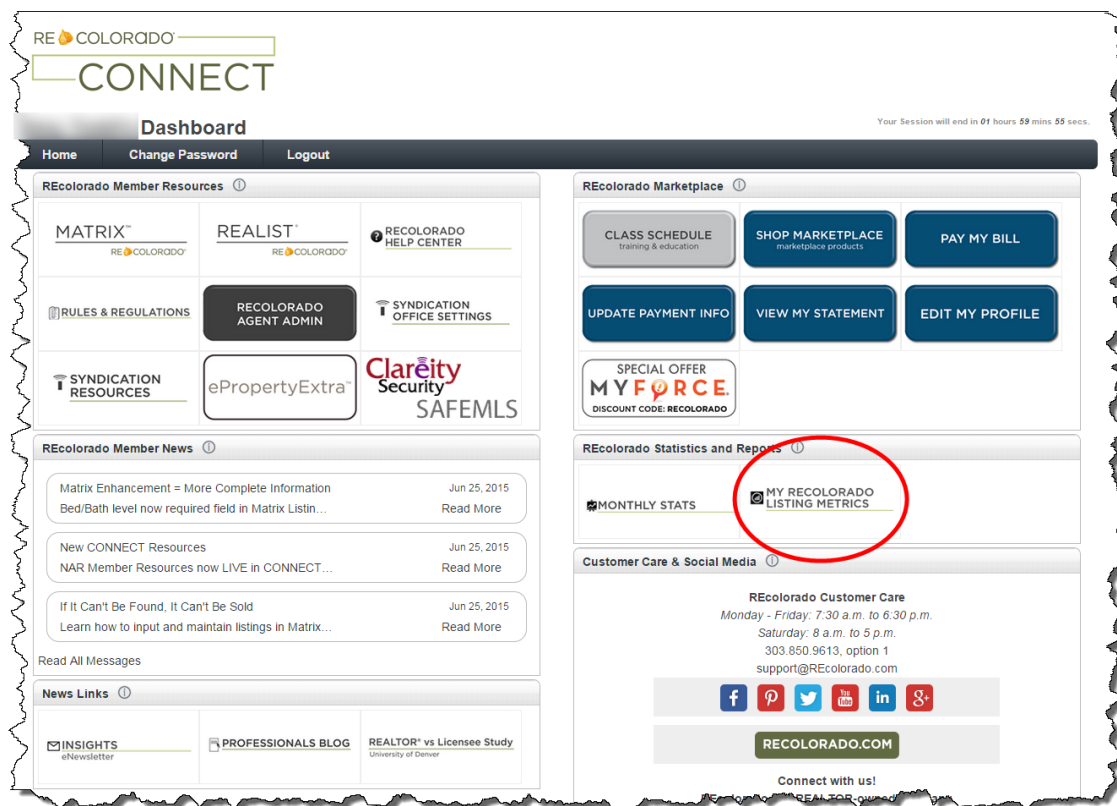
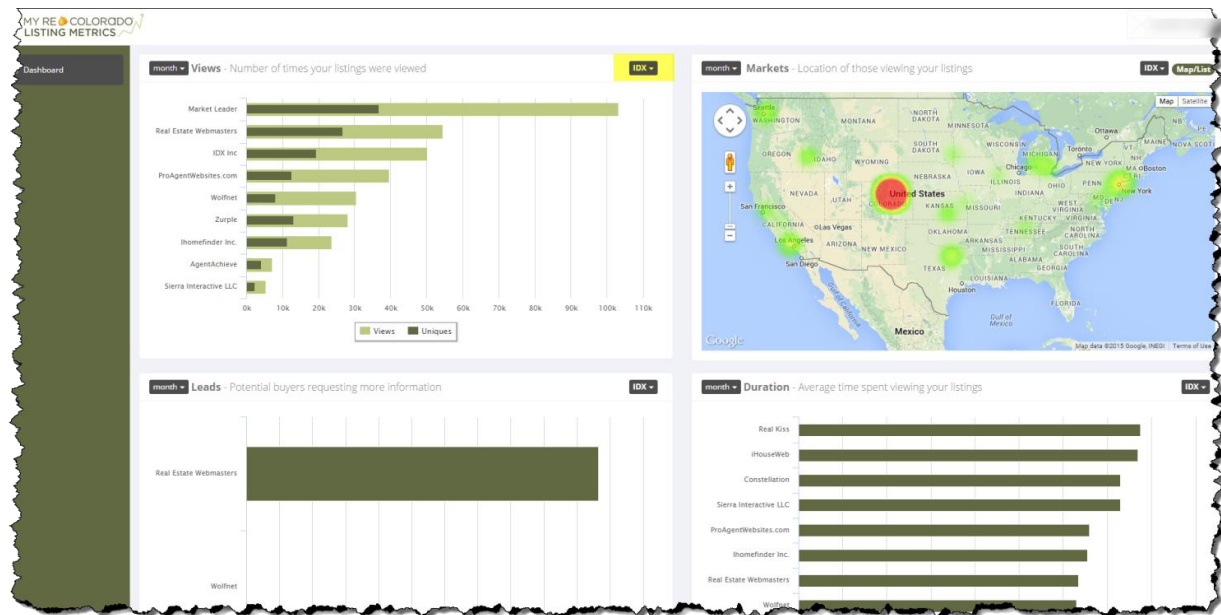
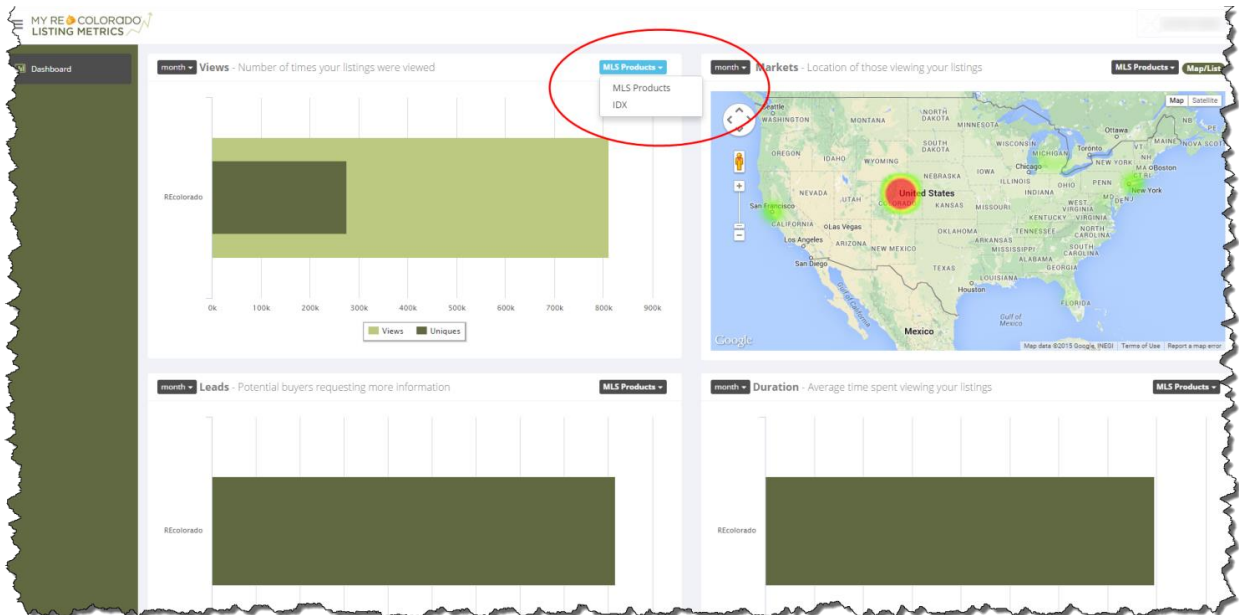


## ListTrac Updates

### IDX Metrics now available in the ListTrac Dashboard!

- When clicking the My REcolorado Listing Metrics button from the CONNECT dashboard, you will continue to be taken directly to the ListTrac dashboard.
- A new option has been added to switch between REcolorado (MLS Products) stats and IDX stats.
- The IDX stats provide tracking information for both the full and mobile IDX sites.
- Metrics are shown for each IDX vendor for the sites where your listings are displayed. If your office has opted out of IDX, no metrics will be visible in the IDX dashboard.
- The dashboard will display the top 10 IDX channels, with an option to drill into the results to see the activity for all IDX sites.





### Matrix Updates

- The Land Broker 1-Page and Client 1-Page reports are being improved with layout and formatting changes similar to the Residential 1-Page reports. This will help us to eventually offer 1-Page reports from Cross Property searches.