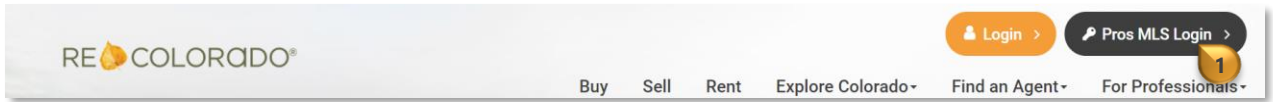
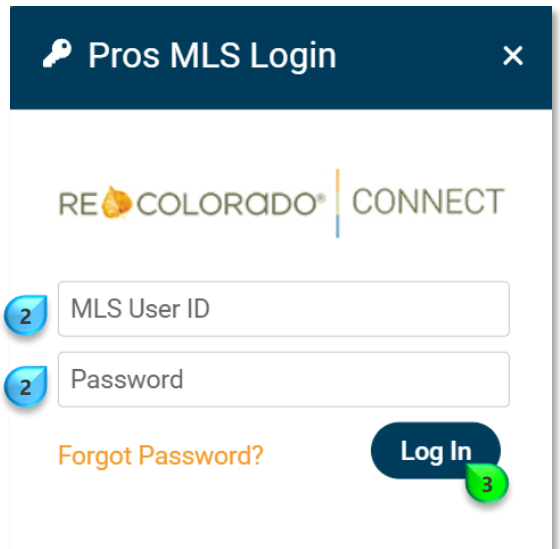


Go to *REcolorado.com* click "**Pros MLS Login**" <sup>1</sup>

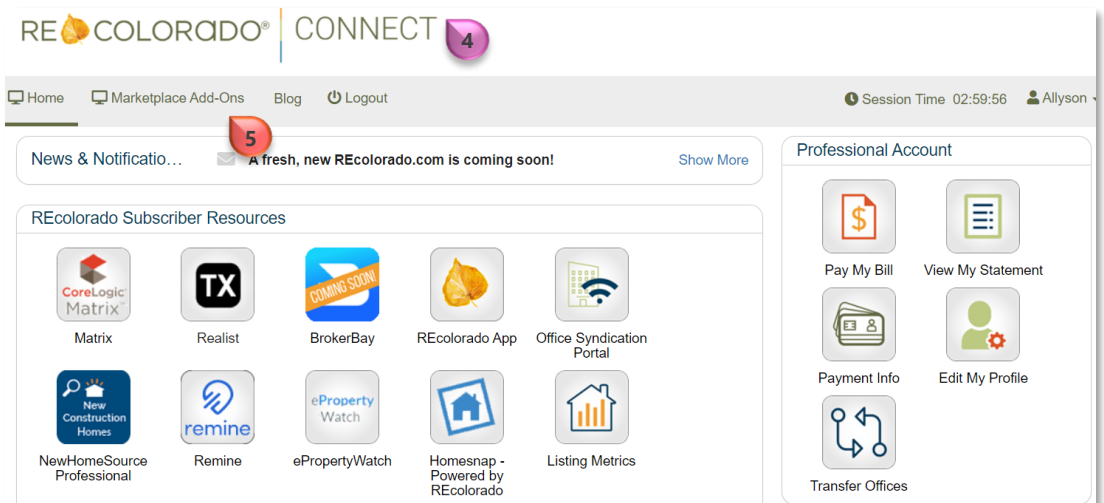


Enter your *REcolorado* credentials in the **Pros MLS Login** fields <sup>2</sup>



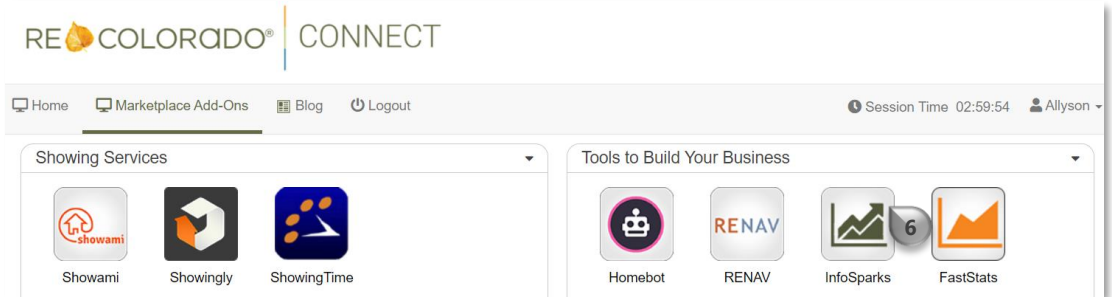
Click "**Log In**" <sup>3</sup>

The **REcolorado CONNECT** Page presents <sup>4</sup>



Click "**Marketplace Add-Ons**" <sup>5</sup>

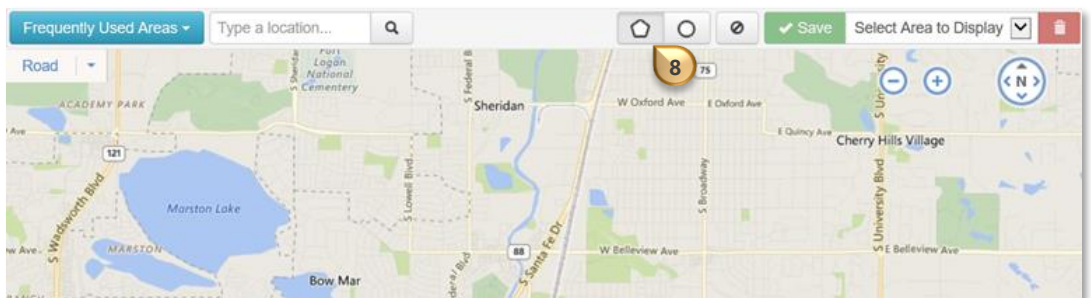
Click "InfoSparks" 6



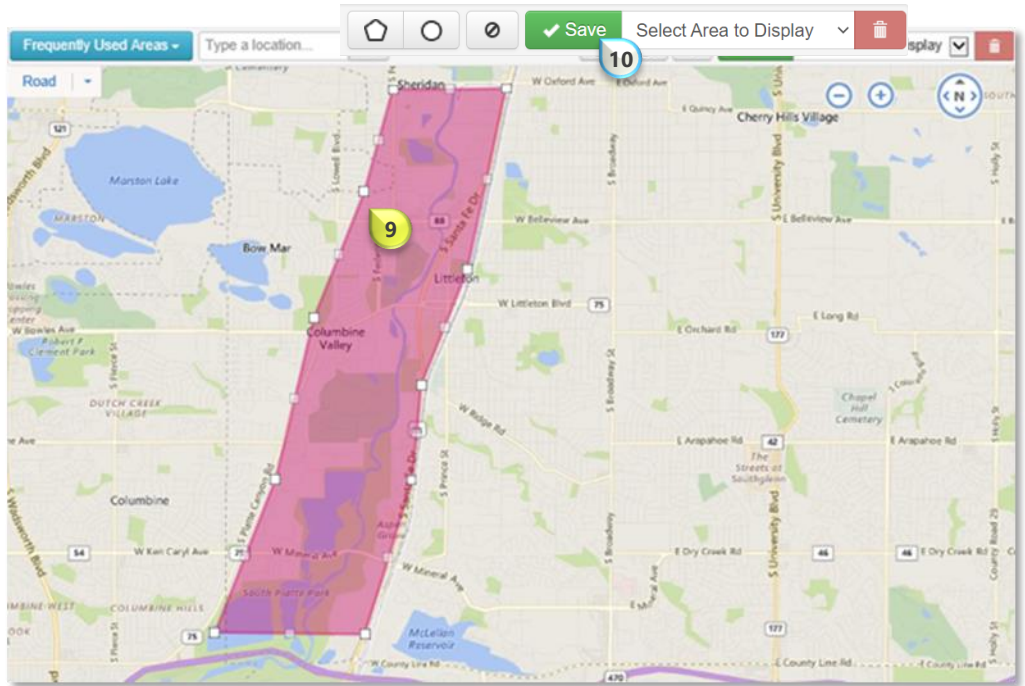
Select the "My Areas" tab 7



Click the desired *drawing tool* to draw a shape on the map 8



Draw a shape on the map **9**



Click "Save" **10**

Type a name for the **My Area** you designated with a map shape in the "Create New Area" field **11**

## Simply save your area and start exploring!

You have 2 options:

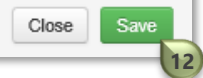
**Create New Area**

Litteton Platte River  Type the name of the new area. **11**

**Replace Your Existing Area**

**Note:** Selected area will be overwritten.

Click "Save" **12**



To leverage "My Areas" click the "Entire MLS" expand collapse arrow **13** and click "My Areas" **14**

