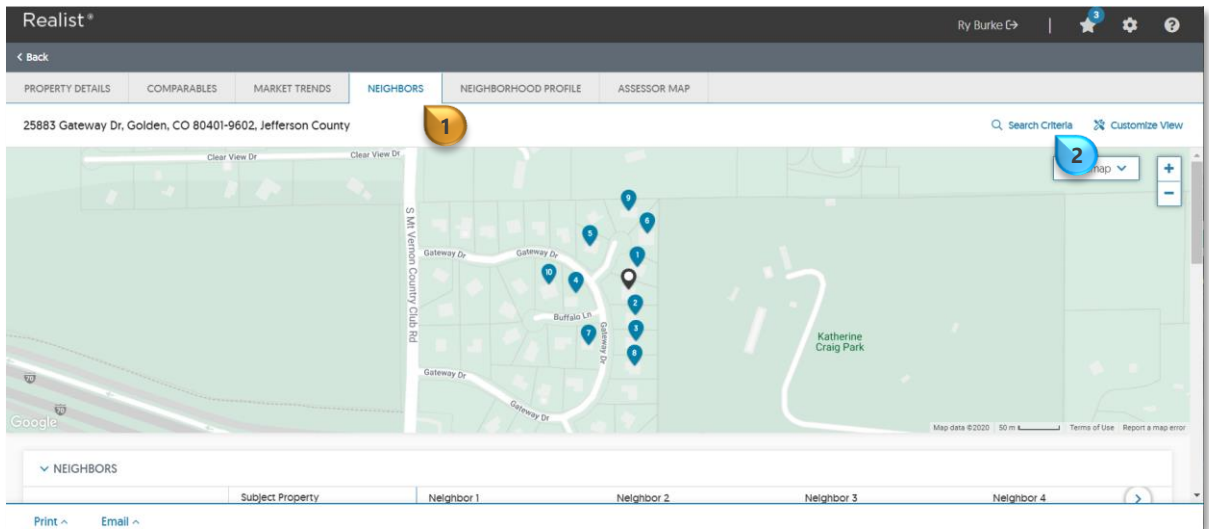


Customize Realist Neighbors Report Criteria

The **Neighbors Report** provides users the option to edit criteria

From the **Neighbors tab** 1

Click **“Search Criteria”** 2



Enter the desired criteria 3

To save, choose from one of the following:

“Submit” – Criteria saves for the current *Realist* session 4

“Save and Submit” – Criteria becomes default in the users *Realist* account 5

Neighbors Search Criteria ✕

Number of Neighbors

Distance from Subject 3

Geographic Boundary 3

Include Property Images

Cancel

Save and Submit 5

Submit 4